



Industrial Solutions



*“Perfect Individual Solutions”*

## TREESSSE PROGETTI Presentation

Since 1986 Treesse develops automation projects in the beer world.

We have acquired a wide know-how and a high professional profile that grant us a position of reliable partner in the international brewery industry. We have business relationships with customers as Heineken, Carlsberg and Birra Castello.

We supply breweries since 20 years as main contractor or in cooperation with the most known suppliers of beer production equipment such as Alfa Laval, APV, Filtrox, GEA Tuchenhagen, Meura.



TREESSSE

**ERP**

**MES**

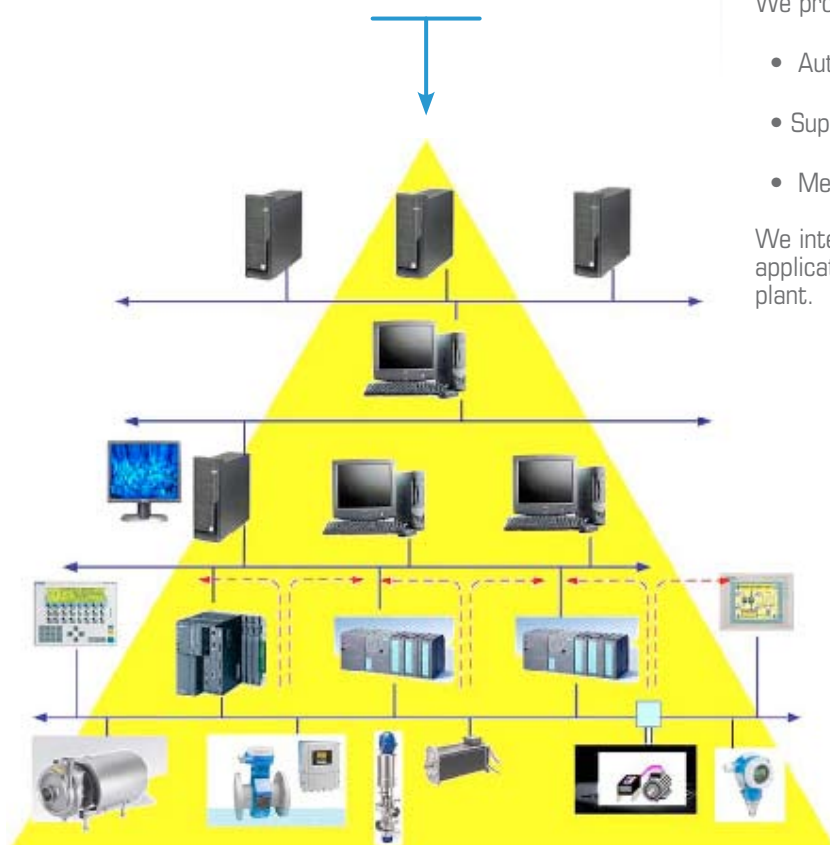
(TreeTrack/Simatic-IT/Archestra/  
MoviSped for logistic)

**SCADA**

(Factory Link/WinCC-PCS7)

**AUTOMATION**

**Field Bus**



## Automation Division

Treesse Progetti offers answers to the specific client's needs developing studies, planning and realising the automation systems with innovative and customised solutions.

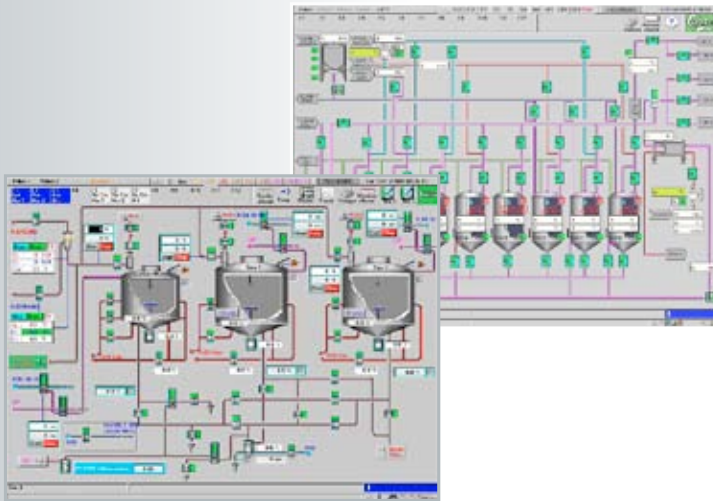
We propose our integrated products of:

- Automation (Hardware, Software, Electrical panels)
- Supervision
- Mes (Manufacturing Execution System)

We integrate and upgrade also the existing automation applications optimising the technological potential of the plant.

TREESSSE

Treesse Progetti is continuously improving software structures for batch control, implementing ISA S88 standards. Visualization is based on Factory Link, WinCC/PCS7, and includes user friendly recipe management, complete data acquisition, report management, Traceability and Tracking using our software TreeTrack, or third part such as Simatic-IT by Siemens or Archestra by Wonderware.



Our SCADA is developed in accordance with the requests of the customer, giving particular attention to details, graphical presentation and friendly operator interfaces.

## “Turnkey” Division

Our offer in the planning phase proposes the following services:

- preliminary planning
- feasibility studies
- financial planning
- engineering of machine systems
- logistics
- commissioning

At the installation phase we carry out all tasks reliably:

- delivery and installation of the machinery and piping with the support of our partners
- delivery and installation of electrical panels, which are engineered and assembled in our electrical department.
- time planning and cost control
- commissioning and acceptance tests

According to your requirements you can make use of individual services or of the whole range of our services, including the execution of the overall project as general contractor.



THE DIFFERENCE IS INSIDE



AND WE HAVE THE KNOW-HOW TO DO IT BETTER

SOME OF OUR REFERENCES:

**HEINEKEN ITALIA:** Brew House - Comun Nuovo  
Meura filters - Comun Nuovo  
Brew House - Massafra  
Brew House - Assemini  
Brew House - Pollein  
Fermentation Cellars - Comun Nuovo  
Fermentation Cellars - Massafra  
Fermentation Cellars - Assemini (only SCADA up grade)  
Fermentation Cellars Pollein (only SCADA up grade)  
Filter Filtrox - Comun Nuovo (two lines)  
Filter Filtrox and Shenk - Massafra (two lines)  
Bright Beer Cellars - Comun Nuovo  
Bright Beer Cellars - Massafra  
Utilities - Comun Nuovo  
Utilities - Massafra  
Bottling conveyors - Massafra

**HEINEKEN WW:** Bottling conveyors - Valencia

**CARLSBERG ITALIA:** Fermentation Cellars - Induno Olona  
Bright Beer Cellars - Induno Olona

**BIRRA CASTELLO:** Brew House - S. Giorgio di Nogaro  
Fermentation Cellars - S. Giorgio di Nogaro  
Bright Beer Cellars - S. Giorgio di Nogaro

Brew House - Pedavena  
Fermentation Cellars - Pedavena  
Beer Filters - Pedavena  
Bright Beer Cellars - Pedavena  
Bottling conveyors - Pedavena

**VELO:** Brew House - Valona  
Fermentation Cellars - Valona  
Beer Filters - Tirana  
Brew House - (Denemark)  
Mini Brewery - Barcon

**THERSIANER:** Brew House - Nervesa  
Fermentation Cellars - Nervesa  
Carbomix - Nervesa

**OTHERS:** Water Treatment plants  
Separator, Carbomix, high gravity  
plants, deareator plant, CIP  
skid plants Co2 recovery plants,  
air unit treatment (UTA),  
screw compressor, water buffer,  
yeast plant, yeast propagator  
plant, hop unit, steam room,  
glycol plants, etc.



Via delle Industrie, 10/a - 31050 Ponzano Veneto (TV) ITALY  
Tel. +39 0422 960811 Fax +39 0422 960850  
www.treesseprogetti.eu - info@treesseprogetti.eu